

# AIM-75S

## 8" Industrial-Grade Tablet with Qualcomm® Snapdragon™ 660 Processor, Android 10 with GMS



DeviceOn/iService Qualcomm SOTI

### Introduction

AIM-75S is an industrial-grade tablet equipped with IP65-rated protection from water and dust ingress and a swappable battery that supports up to 12 hours of operation, making it suitable for diverse indoor and outdoor vertical applications. In addition to WLAN/LTE capabilities that enable mobile computing, AIM-75S can be integrated with optional peripherals such as a 1D/2D barcode scanner, LAN+COM, UHF RFID, and MSR modules to support a wide range of operations in the manufacturing, warehouse, retail, and field service industries. Moreover, AIM-75S is equipped with Advantech's DeviceOn/iService software, which is a next-generation unified device management solution based on the WISE-DeviceOn platform. With support for batch operations and multi-device control, DeviceOn/iService enables easy device configuration and deployment for convenient remote device management.

### Specifications

|                          |                        |  |
|--------------------------|------------------------|--|
| System                   | Processor              | Qualcomm® Snapdragon™ 660 octa-core 2.2 GHz  |
|                          | Memory                 | 4 GB LPDDR4x   |
|                          | Operating System       | Android 10 with GMS  |
| Storage                  | eMMC                   | 64 GB  |
|                          | Micro SD               | Supports up to 2 TB  |
| Display                  | Type                   | 8" IPS LCD   |
|                          | Resolution             | WUXGA 1920 x 1200  |
|                          | Brightness             | 400 cd/m²  |
|                          | Touch Type             | 10-point multi-touch PCAP touch control  |
|                          | Glass Type             | Corning® Gorilla® Glass 3  |
| Communication            | WLAN                   | IEEE 802.11 a/b/g/n/ac/k/v/r   |
|                          | Bluetooth              | Bluetooth® v5.0  |
|                          | WWAN (Optional)        | Global Cat. 4/6 4G LTE (data only)   |
|                          | NFC                    | 13.56 MHz, compatible with ISO15693, ISO14443A, ISO 14443B, FeliCa   |
| Connectivity             | Standard I/O           | 1 x USB Type-C 3.0, 1 x combo audio jack, 1 x SIM card reader, 1 x micro SD card reader                    |
|                          | Extended I/O           | 1 x AIM extension 14-pin pogo connector: 1 x USB 2.0, 1 x 2-wire UART, 5V/1A power                         |
|                          | Docking                | 1 x AIM docking 16-pin pogo connector: 1 x USB 2.0, 9V power   |
|                          | Speaker                | 1 x Internal speakers (1.5W)   |
|                          | GPS                    | GPS  |
| Audio                    | Audio Jack             | 1 x Audio combo jack (combines stereo audio output and mono microphone input)                              |
| Camera                   | Front                  | 5 megapixel fixed-focus camera   |
|                          | Rear                   | 8 megapixel auto-focus camera with LED flash   |
| Sensors                  |                        | Ambient light sensor, P-sensor, e-compass, g-sensor, gyroscope   |
| Control Buttons          |                        | 1 x Power button, 2 x volume keys (up/down), 1 x programmable function key                                 |
| System Indicators        |                        | Full: green (100%); charging: blue; low charge: red (≤10%)   |
| Power System             | Input Voltage          | USB Type-C: 5V/3A, 9V/3A<br>Dock pogo: 9V/2A   |
|                          | Battery                | Swappable battery: 4900 mAh (minimum) 18.6 Whr<br>Operating time: up to 12 hrs*<br>Charging time: < 3 hrs* |
|                          |                        |  |
| Environmental            | Operating Temperature  | -10 ~ 50 °C/14 ~ 122 °F  |
|                          | Storage Temperature    | -20 ~ 60 °C/-4 ~ 140 °F  |
|                          | IP Rating              | IP65   |
|                          | Shock                  | SAE J1455  |
|                          | Vibration              | SAE J1455  |
|                          | Humidity               | Operating: 10 ~ 90% @ 40 °C/104 °F non-condensing<br>Storage: -10 ~ 95% non-condensing                     |
| Physical Characteristics | Drop Tested            | Up to 120 cm (4 ft) onto plywood   |
|                          | Dimensions (W x D x H) | 240 x 142 x 14.5 mm/9.44 x 5.59 x 0.57 in  |
|                          | Weight                 | 600 g/1.32 lb  |
| Certifications           | Color                  | Dark gray  |
|                          |                        | FCC, CE, TELEC, NCC, RCM, IC, VCCI, PTCRB, SRRC, CB, UL, CCC, BSMI   |

\*The battery operation duration and recharge time may vary according to different factors such as screen brightness, applications, features, power management, battery condition, and other configurable settings.

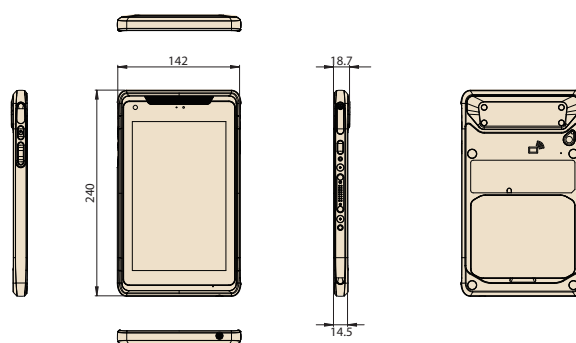
## Specifications (Cont.)

|   |   |            |
|---|---|------------|
| DeviceOn/iService<br>Remote Device Management | Operating System                            | Android 10 |
|   | Common Controls (Reboot, Shutdown)          | V          |
|   | Device-Specific Controls (Audio, Backlight) | V          |
|   | Connection Status                           | V          |
|   | Hardware Status                             | V*         |
|   | Batch Operation Support                     | V          |
|   | OTA Storage Management                      | Local blob |
|   | APP OTA Updates                             | V          |
|   | Software Watchlist                          | V          |
|   | Software Start/Stop                         | V          |
| *Dependant on device model                    | Peripherals Watchlist                       | V*         |

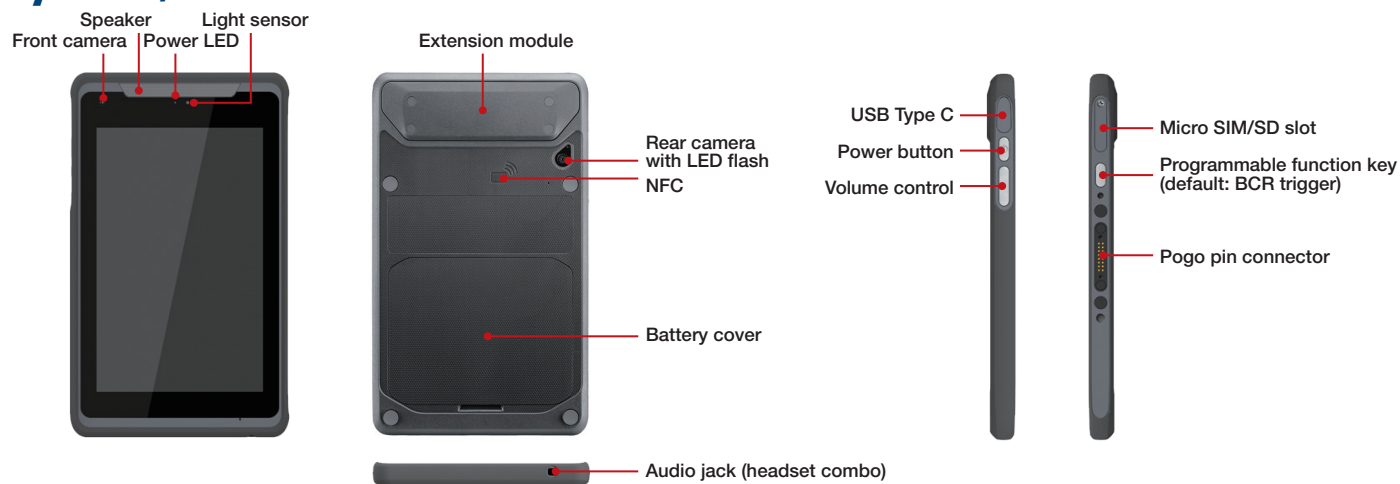
Note: DeviceOn/iService software must be downloaded from the Advantech website at <https://www.advantech.com/search/?q=DeviceOn%2FiService&st=support&sst=Utility>

## Dimensions

Unit: mm



## System I/O



## Ordering Information

| Part Number    | Wi-Fi | LTE | GMS | Applicable Regions / Countries    |
|----------------|-------|-----|-----|-----------------------------------|
| AIM-75S-211S10 | ✓     |     | ✓   | Global (except Europe)            |
| AIM-75S-221S10 | ✓     |     | ✓   | Europe (except Turkey and Russia) |
| AIM-75S-200S10 | ✓     |     |     | Global                            |
| AIM-75S-311S10 | ✓     | ✓   | ✓   | North America                     |
| AIM-75S-611S10 | ✓     | ✓   | ✓   | Global (except Europe)            |
| AIM-75S-621S10 | ✓     | ✓   | ✓   | Europe (except Turkey and Russia) |
| AIM-75S-300S10 | ✓     | ✓   |     | North America                     |
| AIM-75S-600S10 | ✓     | ✓   |     | Global                            |
| AIM-75S-800S10 | ✓     | ✓   |     | China                             |

Note: For mandatory regulations by country, refer to page 1.

## Optional Accessories

| Part Number   | Description                               |
|---------------|---|
| AIM-ADP0-0525 | ADP 45W 100~240V Type-C PD                |
| 1700001524    | Power cord (USA) UL 3P 10A 125V 183 cm    |
| 1700008921    | Power cord (Japan) PSE 3P 7A 125V 183 cm  |
| 1700019146    | Power cord (China) CCC 3P 10A 250V 183 cm |
| 1700018553    | Power cord (NZ/AU) SAA 3P 10A 250V 183 cm |
| 170203180A    | Power cord (UK) BSI 3P 10A 250V 183 cm    |
| 170203183C    | Power cord (EU) 3P 2.5A 250V 183 cm       |

Note: Power cords are suitable for AIM-75, AIM-VSD, and AIM-MCS.

## Packing List

| Description       |
|-------------------|
| 1 x AIM-75 tablet |
| 1 x AC/DC adaptor |
| 1 x Power cord TW |

# DeviceOn/iService

## Unified Remote Device Management Software



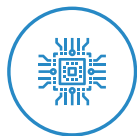
### Features

- Supports Advantech devices equipped with Windows, Android, and Linux OS
- Flexible device, location, user, and permissions management
- Enables remote monitoring and control of hardware, software, and peripherals
- Supports over-the-air (OTA) firmware and software updates
- Ensures quick, easy, and secure device onboarding
- RESTful APIs for third-party system integration

### Introduction

Advantech's DeviceOn/iService is a next-generation unified device management solution based on the WISE-DeviceOn platform. Designed to enable centralized monitoring and remote management, DeviceOn/iService supports Advantech devices equipped with Windows, Linux, or Android operating systems. The software also supports the management of applications and integrated peripherals, such as a barcode scanner, card reader, camera, and printer. Users can remotely access and control connected devices, take screenshots, rollout OTA upgrades, and use remote desktop capabilities for troubleshooting from any location at any time. Moreover, DeviceOn/iService supports batch operations to facilitate the management of multiple devices simultaneously for easy and convenient device configuration and deployment.

### Total Management



#### Devices & Hardware

- Windows, Linux, Android
- Hardware, storage, battery



#### Software & Peripherals

- Software monitoring & access
- Screens, USB devices, printers



#### Open for Expansion

- Peripheral integration
- Open APIs for integration

### Remote Access



#### Real-Time Monitoring

- Connection/hardware status
- Software/peripheral status
- Failure notifications



#### Remote Controls

- Power controls
- Audio, backlight controls
- Software controls



#### Troubleshooting

- Screenshots
- Remote desktop support

### Operational Efficiency



#### OTA updates

- System/software updates
- File repository management
- App store



#### Batch Controls

- 1-to-many batch reboot, etc.
- Time-saving tasks

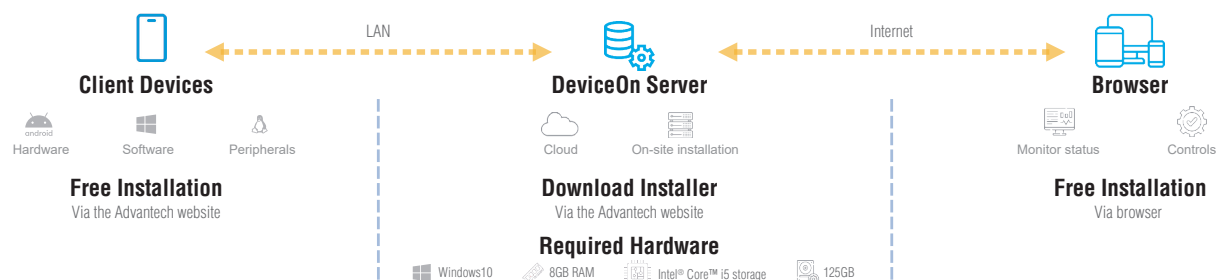


#### Setup Booster

- Software/peripheral watchlist
- Roles, rule templates

Note: Some functions may vary according to the product

### System Architecture



# Vehicle Docking Station



## Features

- Compatible with 9 ~ 32 V<sub>DC</sub> in-vehicle power supply
- Rapid single-handed docking and undocking
- Anti-theft locking mechanism
- External GPS antenna
- Programmable function keys
- High-density connector
- Compliant with SAE J1455 for vibration and shock tolerance
- Safe and reliable design for vehicle applications

## Specifications

|               |                          | Fully Configured Unit   | Charging Dock Only |
|---------------|--------------------------|---|--------------------|
| I/O           | High-Density Connector   | 1 x CAN bus (supports raw CAN, J1939, OBD-II/ISO 15765) with configurable firmware                          |                    |
|               |                          | 5 x Digital inputs  |                    |
| I/O           | High-Density Connector   | 1 x Odometer (supports dry and wet contact) with configurable and switchable firmware (default wet contact) |                    |
|               |                          | 2 x Digital outputs (supports speed pulse)  | N/A                |
|               |                          | 1 x RS-232 (4 wire)   |                    |
|               |                          | 1 x RS-232/485 (2 wire) (default RS-485, termination enabled)   |                    |
|               |                          | 1 x USB 2.0   |                    |
|               |                          | 1 x Power output 12V 1A   |                    |
| GPS           | Extended GPS             | 1 x External GPS antenna  | N/A                |
| Function Keys |                          | 5 x Programmable function keys  | N/A                |
| Key Lock      |                          | Anti-theft key lock (key can be removed)  | N/A                |
| Power         | Input Voltage            | Supports 12/24 V vehicle power (9 ~ 32 V <sub>DC</sub> input range)   |                    |
| Mechanical    | Dimensions (W x D x H)   | 196 x 76.9 x 212.75 mm/7.71 x 3.02 x 8.37 in  |                    |
|               | Weight                   | 0.5 kg/1.10 lb  |                    |
| Environmental | Operating Temperature    | -10 ~ 50 °C/14 ~ 122 °F (0 ~ 40 °C/32 ~ 104 °F when charging)   |                    |
|               | Storage Temperature      | -30 ~ 80 °C/-22 ~ 176 °F  |                    |
|               | IP Rating                | IP54  |                    |
|               | Vibration/Shock          | SAE J1455   |                    |
|               | Safety                   | UL, CB, LVD, CCC  |                    |
|               | Vehicle Power Regulation | E-Mark, ISO7637-2   |                    |
|               | Certifications           | CE, FCC, CCC  |                    |

## Ordering Information

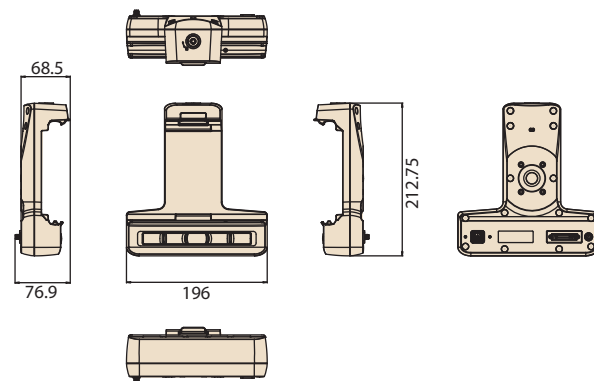
| Part Number      | Description  |
|------------------|--|
| AIM-VEH7-0000    | AIM vehicle docking station (advanced I/O)           |
| AIM-VEH7-0010    | AIM vehicle docking station (power only)             |
| 1700026766-01    | High-density cable                                   |
| PWS-770-GPSAN00E | External GPS antenna                                 |
| 1700027666-01    | Vehicle power cable (In-house engineer testing only) |
| 1700027665-01    | Vehicle power cable (vehicle battery)                |

## Packing List

| Item | AIM-VEH7-0000                             | AIM-VEH7-0010                             |
|------|---|---|
| 1    | 1 x Vehicle dock (advanced I/O)           | 1 x Vehicle dock (power only)             |
| 2    | 1 x Vehicle power cable (vehicle battery) | 1 x Vehicle power cable (vehicle battery) |

## Dimensions

Unit: mm



# Office / VESA Docking Station



## Features

- 9 ~ 32 V wide input voltage range
- VESA (75 x 75 mm) compliant docking stations
- -10 ~ 50 °C/14 ~ 122 °F operating temperature
- Reliable docking connector for diverse applications

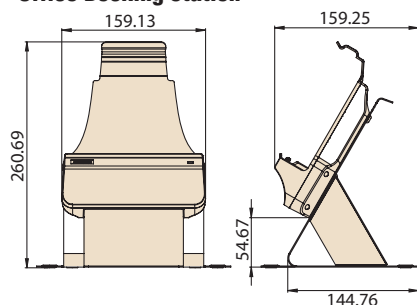
## Specifications

|               |                        | Office Docking Station<br>(full I/O configuration)                 | Office Docking Station<br>(basic configuration)  | VESA Docking Station<br>(full I/O configuration)                   | VESA Docking Station<br>(USB)                |
|---------------|------------------------|--|--|--|--|
| I/O           |                        | 2 x USB 3.0<br>1 x RS-232 COM<br>1 x Gigabit LAN<br>1 x Power jack | 2 x USB 2.0<br>1 x Power jack                    | 2 x USB 3.0<br>1 x RS-232 COM<br>1 x Gigabit LAN<br>1 x Power jack | 2 x USB 2.0<br>1 x Power jack                |
| Stand         |                        | SECC steel   | SECC steel                                       | N/A  | N/A  |
| Power         | Input Voltage          | 9 ~ 32 V   | 19 V   | 9 ~ 32 V   | 19 V   |
| Mechanical    | Dimensions (W x D x H) | 215 x 174.29 x 260.69 mm/<br>8.5 x 6.9 x 10.3 in                   | 215 x 174.29 x 260.69 mm/<br>8.5 x 6.9 x 10.3 in | 160 x 61.8 x 189.2 mm/<br>6.3 x 2.4 x 7.4 in                       | 160 x 61.8 x 189.2 mm/<br>6.3 x 2.4 x 7.4 in |
|               | Weight                 | 0.75 kg/1.65 lb  | 0.748 kg/1.64 lb                                 | 0.282 kg/0.62 lb   | 0.28 kg/0.61 lb                              |
| Environmental | Operating Temperature  | -10 ~ 50 °C/14 ~ 122 °F  |  |  |  |
|               | Storage Temperature    | -20 ~ 70 °C/-4 ~ 158 °F  |  |  |  |
|               | Safety                 | UL, CB, LVD, CCC   |  |  |  |
|               | Certifications         | CE, FCC, CCC   |  |  |  |

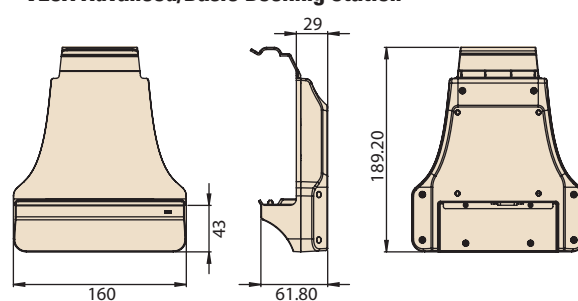
## Dimensions

Unit: mm

### Office Docking Station



### VESA Advanced/Basic Docking Station



## Ordering Information

| Part Number   | Description  |
|---------------|--|
| AIM-OFD0-0170 | AIM 8 advanced office docking station (full I/O configuration) |
| AIM-OFD0-0171 | AIM 8 office docking station (USB)                             |
| AIM-VSD0-0170 | AIM 8 advanced VESA docking station (Full I/O configuration)   |
| AIM-VSD0-0171 | AIM 8 VESA docking station with USB (USB)                      |
| AIM-STD0-0000 | AIM 8 VESA stand   |

## Optional Accessories

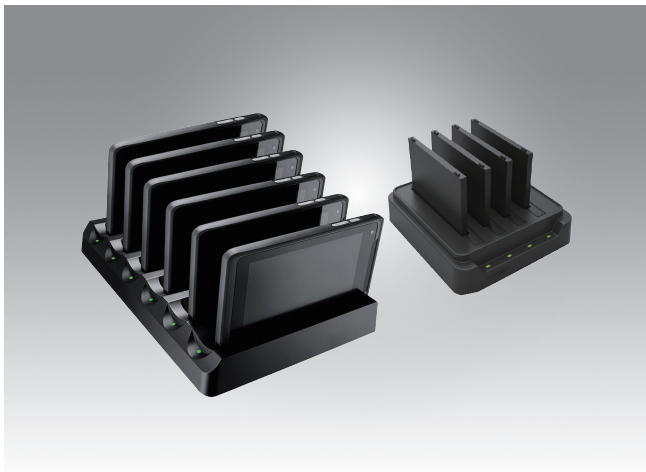
| Part Number      | Description                                    |
|------------------|--|
| 96PSA-A65W19V1-3 | ADP A/D 100-240V 65W 19V C6 DC PLUG 180° 62368 |
| 1700001524       | Power cord (USA) UL 3P 10A 125V 183 cm         |
| 1700008921       | Power cord (Japan) PSE 3P 7A 125V 183 cm       |
| 1700019146       | Power cord (China) CCC 3P 10A 250V 183 cm      |
| 1700018553       | Power cord (NZ/AU) SAA 3P 10A 250V 183 cm      |
| 170203180A       | Power cord (UK) BSI 3P 10A 250V 183 cm         |
| 170203183C       | Power cord (EU) 3P 2.5A 250V 183 cm            |

## Packing List

| Item | AIM-OFD0-0170                            | AIM-OFD0-0171         |
|------|--|-----------------------|
| 1    | 1 x Office dock (full I/O configuration) | 1 x Office dock (USB) |
| 2    | 1 x AC/DC adaptor                        | 1 x AC/DC adaptor     |
| Item | AIM-VSD0-0170                            | AIM-VSD0-0171         |
| 1    | 1 x VESA dock (full I/O configuration)   | 1 x VESA dock (USB)   |
| 2    | 1 x AC/DC adaptor                        | 1 x AC/DC adaptor     |

Note: This product does not include a power cable. Please order a power cable using the part number according to your usage requirements.

# AIM Multi-Bay Charging Station



## Features

- Can charge up to 6 tablets/4 batteries simultaneously
- Overcurrent and overvoltage protection provided
- Rapid single-handed docking and undocking
- LED indicators for monitoring charging status

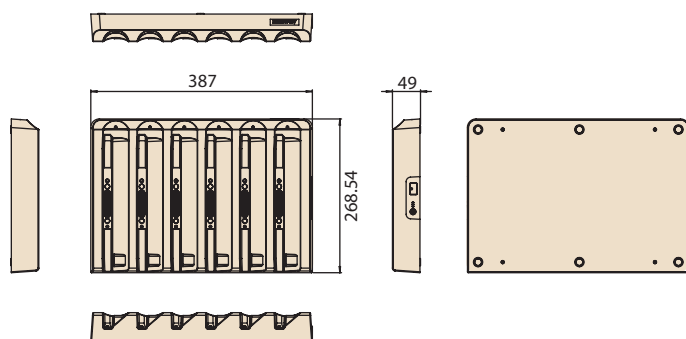
## Specifications

|                |                        | Multi-Tablet Charging Station                | Multi-Battery Charging Station               |
|----------------|------------------------|--|--|
| Capacity       | Number of Bays         | 6  | 4  |
|                | Charging Current       | 2A   | 2.5A   |
|                | Charging Voltage       | 9 V  | 4.35 V                                       |
|                | Input Voltage          | 19 V   | 19 V   |
| LED Indicators |                        | Green: Full<br>Amber: Charging<br>Red: Error | Green: Full<br>Amber: Charging<br>Red: Error |
|                | Dimensions (W x D x H) | 387 x 269 x 49 mm/15.23 x 10.59 x 1.92 in    | 144 x 155 x 39 mm/5.66 x 6.10 x 1.53 in      |
|                | Weight                 | 1.98 kg/4.36 lb                              | 0.48 kg/1.05 lb                              |
| Mechanical     | Operating Temperature  | 0 ~ 40 °C/32 ~ 104 °F                        | 0 ~ 40 °C/32 ~ 104 °F                        |
|                | Storage Temperature    | -10 ~ 50 °C/14 ~ 122 °F                      | -10 ~ 50 °C/14 ~ 122 °F                      |
|                | Safety                 | UL, CB, LVD, CCC, RCM                        | UL, CB, LVD, CCC, RCM                        |
|                | Certifications         | CE, FCC, CCC, RCM, BSMI                      | CE, FCC, CCC, RCM, BSMI                      |

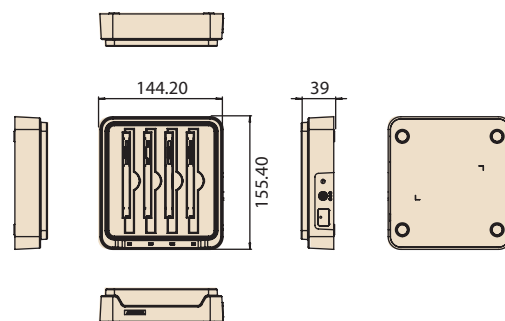
## Dimensions

Unit: mm

### Multi-Tablet Charging Station



### Multi-Battery Charging Station



## Ordering Information

| Part Number   | Description                            |
|---------------|--|
| AIM-CHG0-0150 | Multi-tablet charging station for AIM  |
| AIM-MBC0-0051 | Multi-battery charging station for AIM |

## Optional Adapter

| Model         | Adapter Part Number | Description                                    |
|---------------|---------------------|--|
| AIM-CHG0-0150 | XAIM-GST120A20-P1M  | ADP A/D 100-240V 120W 20V DC Plug              |
| AIM-MBC0-0051 | 96PSA-A65W19V1-3    | ADP A/D 100-240V 65W 19V C6 DC PLUG 180° 62368 |

## Packing List

| Item | AIM-MBC0-0051                      |
|------|------------------------------------|
| 1    | 1 x Multi-battery charging station |
| 2    | 1 x AC/DC adaptor                  |

Note: This product does not include a power cable. Please order a power cable using the part number according to your usage requirements.

## Optional Power Cable

| Part Number | Description                               |
|-------------|---|
| 1700001524  | Power cord (USA) UL 3P 10A 125V 183 cm    |
| 1700008921  | Power cord (Japan) PSE 3P 7A 125V 183 cm  |
| 1700019146  | Power cord (China) CCC 3P 10A 250V 183 cm |
| 1700018553  | Power cord (NZ/AU) SAA 3P 10A 250V 183 cm |
| 170203180A  | Power cord (UK) BSI 3P 10A 250V 183 cm    |
| 170203183C  | Power cord (EU) 3P 2.5A 250V 183 cm       |

# Peripherals and Accessories

## Extension Modules

**Barcode scanner (20°)**



**Barcode scanner (70°)**



**MSR + barcode scanner module**



**MSR module**



| Part Number | AIM-EXT0-0040  | AIM-EXT0-0041  | AIM-P521A0  | AIM-P521B0   |
|-------------|--|--|---|--|
| Features    | <ul style="list-style-type: none"> <li>Sensor: 640 x 480 CMOS sensor</li> <li>Illumination/Aimer: white LED illumination/red LED dot aimer</li> <li>Frame rate: 30 fps</li> <li>Field of view: horizontal: 37.8°; vertical: 28.8°</li> </ul> | <ul style="list-style-type: none"> <li>Sensor: 640 x 480 CMOS sensor</li> <li>Illumination/Aimer: white LED illumination/red LED dot aimer</li> <li>Frame rate: 30 fps</li> <li>Field of view: horizontal: 37.8°; vertical: 28.8°</li> </ul> | <p><b>MSR</b></p> <ul style="list-style-type: none"> <li>Swipe Speed: 3 ~ 75 in/sec</li> <li>Supported Format: ISO 7811/JIS II bi-directional swipe</li> </ul> <p><b>Barcode Scanner</b></p> <ul style="list-style-type: none"> <li>Sensor: 640 x 480 CMOS sensor</li> <li>Illumination/Aimer: white LED illumination/red LED dot aimer</li> <li>Frame rate: 30 fps</li> <li>Field of view: horizontal: 37.8°; vertical: 28.8°</li> </ul> | <ul style="list-style-type: none"> <li>Swipe Speed: 3 ~ 75 in/sec</li> <li>Supported Format: ISO 7811/JIS II bi-directional swipe</li> </ul> |
| Dimensions  | 130.2 x 38.7 x 27.8 mm/<br>5.12 x 1.52 x 1.09 in   | 130.2 x 38.7 x 32 mm/<br>5.12 x 1.52 x 1.25 in   | 130.2 x 68.84 x 80 mm/<br>5.12 x 2.71 x 3.15 in   | 130.2 x 68.84 x 80 mm/<br>5.12 x 2.71 x 3.15 in  |
| Weight      | 0.042 kg/0.092 lb  | 0.042 kg/0.092 lb  | 100 g/0.22 lb   | 82 g/0.18 lb   |

**LAN + COM module**



**UHF RFID reader**



**UHF RFID reader**



**UHF RFID reader (flat type)**



| Part Number | AIM-EXT0-0046                                | AIM-EXT0-0047  | AIM-EXT0-0049  | AIM-EXT0-0050  |
|-------------|--|--|--|--|
| Features    | 1 x 10/100 Ethernet port<br>1 x COM port     | <ul style="list-style-type: none"> <li>RFID output: 25W</li> <li>Antenna type: Linear polarization</li> <li>Frequency: EU: 867 ~ 869 MHz</li> <li>Supported tag standard: EPC Class 2, Gen. 2/ ISO 18000-6C</li> </ul> | <ul style="list-style-type: none"> <li>RFID output: 25W</li> <li>Antenna type: Linear polarization</li> <li>Frequency: US: 913 ~ 917 MHz</li> <li>Supported tag standard: EPC Class 2, Gen. 2/ ISO 18000-6C</li> </ul> | <ul style="list-style-type: none"> <li>RFID output: 25W</li> <li>Antenna type: Linear polarization</li> <li>Frequency: EU: 867 ~ 869 MHz</li> <li>Supported tag standard: EPC Class 2, Gen. 2/ ISO 18000-6C</li> </ul> |
| Dimensions  | 130.2 x 70 x 29 mm/<br>5.12 x 2.75 x 1.14 in | 130.2 x 63.8 x 79.40 mm/<br>5.12 x 2.5 x 3.13 in   | 130.2 x 63.8 x 79.40 mm/<br>5.12 x 2.5 x 3.13 in   | 130.2 x 110.75 x 82.51 mm/<br>5.12 x 4.35 x 3.25 in  |
| Weight      | 0.078 kg/0.171 lb                            | 0.08 kg/0.176 lb   | 0.08 kg/0.176 lb   | 160 g/0.352 lb   |



## Basic Docking Station

### Simple charger



| Part Number | AIM-P508A0  |
|-------------|---|
| Features    | 1 x Micro USB charging port<br>Micro USB 18W adapter/power cord are optional,<br>Adapter PN: XAIM-A16-018N1A<br>Power cord PN: refer to page 2<br>1 x USB 2.0 |
| Dimensions  | 180 x 140 x 120 mm/7.08 x 5.51 x 4.72 in  |
| Weight      | 450 g/0.99 lb   |

## Accessories

### Hand strap



### Shoulder strap



### 360° rotatable hand strap



### AIM8" rugged case



Stylus holder

| Part Number | AIM-SRP0-0000                        | AIM-SRP0-0001                                | AIM-SRP0-0004                               | AIM-SRP0-0005   |
|-------------|--------------------------------------|--|---|---|
| Features    | 1 x Black strap<br>1 x Stylus holder | 1 x Black strap<br>1 x Stylus holder         | 1 x Black strap that supports 360° rotation | 1 x Black rugged case<br>Enhance drop tolerance to 1.8M |
| Dimensions  | 240 x 20 mm/<br>9.44 x 0.78 in       | 380 x 135 x 20 mm/<br>14.96 x 5.31 x 0.78 in | 160 x 160 mm/<br>6.3 x 6.3 in               | 244.08 x 149.2 x 20.59mm /<br>9.6 x 5.87 x 0.81 in      |
| Weight      | 0.022 kg/0.048 lb                    | 0.05 kg/0.11 lb                              | 158 g/0.35 lb                               | 57g /0.125 lb   |

### Battery with meter



### Active stylus



### AIM8 AG+AR screen protection film



### Holster



| Part Number | AIM-BAT0-0252                                | AIM-P705                        | AIM-EXT0-0181   | AIM-HOL0-0160                              |
|-------------|--|---------------------------------|---|--|
| Features    | 1 x Black battery                            | 1 x Silver stylus pen           | Surface Hardness: 2 ~ 3H<br>Reflection Rate: 0.15%<br>Haze: 15% | 1 x Black holster                          |
| Dimensions  | 98 x 84.5 x 6.5 mm/<br>3.85 x 3.32 x 0.25 in | 140 x 9.7 mm/<br>5.51 x 0.38 in | 212 x 128 x 0.15 mm/<br>8.35 x 5.04 x 0.006 in                  | 250 x 150 x 30 mm/<br>9.84 x 5.9 x 1.18 in |
| Weight      | 0.104 kg/0.229 lb                            | 0.02 kg/0.044 lb                | 0.009 kg/0.02 lb  | 0.23 kg/0.5 lb                             |