

CN2510 Series

8 and 16-port RS-232 terminal servers



Features and Benefits

- LCD control panel for easy on-site management
- Supports up to 16 dial-in users when operating as a standalone remote access server
- Supports PPP/SLIP with RADIUS authentication and RIP I/II routing protocols
- Real COM/TTY drivers for Windows and Linux
- 48 VDC for telecom applications (for CN2510-8/16-48V)

Certifications

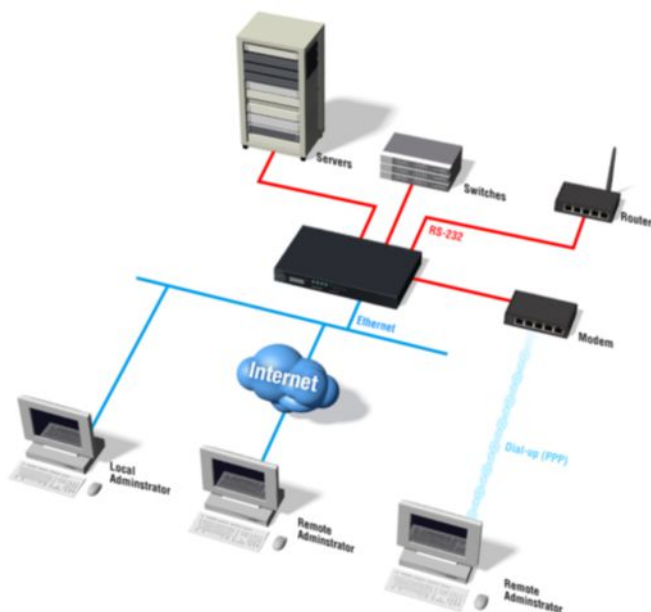


Introduction

For most companies, the performance of IT equipment is critical to daily operation. To keep a server, router, PBX, or leased-line modem working properly, it is important to minimize downtime and troubleshoot faulty devices quickly. KVM is commonly used for in-band management of devices that are equipped with a screen and keyboard. However, RS-232 console access is often used as a last resort for all devices.

Remote Console Management

The CN2510 provides an easy console management solution in a convenient 1U rackmount package. With its RS-232 ports, connections are easily established to the console ports of network equipment, such as UNIX servers or routers, for centralized management of the attached devices. Each device's RS-232 console port becomes a network-accessible node, giving users Telnet access from anywhere on the network for configuration and management of the device. Full modem control signals are supported, ensuring compatibility with a wide range of serial peripherals.



User Authentication

It is very important that access is strictly controlled in a console management solution, and user privileges should be validated before a console port connection is allowed. The CN2510's authentication procedure involves verifying the username and password against an internal database or a RADIUS server.

Dial-Back

When a dial-up connection is used for out-of-band management, the CN2510 provides a convenient dial-back function. Instead of accepting a connection request directly, the CN2510 calls back the management host to establish the connection. The dial-back function helps ensure that only registered users or hosts can remotely connect to the network through the CN2510, and helps to minimize long-distance phone costs.

Appearance



Specifications

Ethernet Interface

10/100BaseT(X) Ports (RJ45 connector)	1
---------------------------------------	---

Ethernet Software Features

Management	Device Search Utility (DSU), DHCP Client, TCP/IP, UDP
MIB	MIB-II
Security	RADIUS
Unicast Routing	RIPV1/V2, Static Route
Windows Real COM Drivers	Windows 95/98/ME/NT/2000, Windows XP/2003/Vista/2008/7/8/8.1/10 (x86/x64), Windows 2008 R2/2012/2012 R2 (x64), Windows Embedded CE 5.0/6.0, Windows XP Embedded
Linux Real TTY Drivers	Kernel version: 2.4.x, 2.6.x, 3.x, 4.x
Fixed TTY Drivers	SCO UNIX, SCO OpenServer, UnixWare 7, QNX 4.25, QNX 6, Solaris 10, FreeBSD, AIX 5.x, HP-UX 11i, Mac OS X

Serial Interface

Connector	8-pin RJ45
No. of Ports	CN2510-8 Series: 8 CN2510-16 Series: 16
Serial Standards	RS-232
Operation Modes	Terminal mode
Baudrate	50 bps to 921.6 kbps
Data Bits	5, 6, 7, 8
Stop Bits	1, 1.5, 2
Parity	None, Even, Odd, Space, Mark
Flow Control	None, RTS/CTS, XON/XOFF

Power Parameters

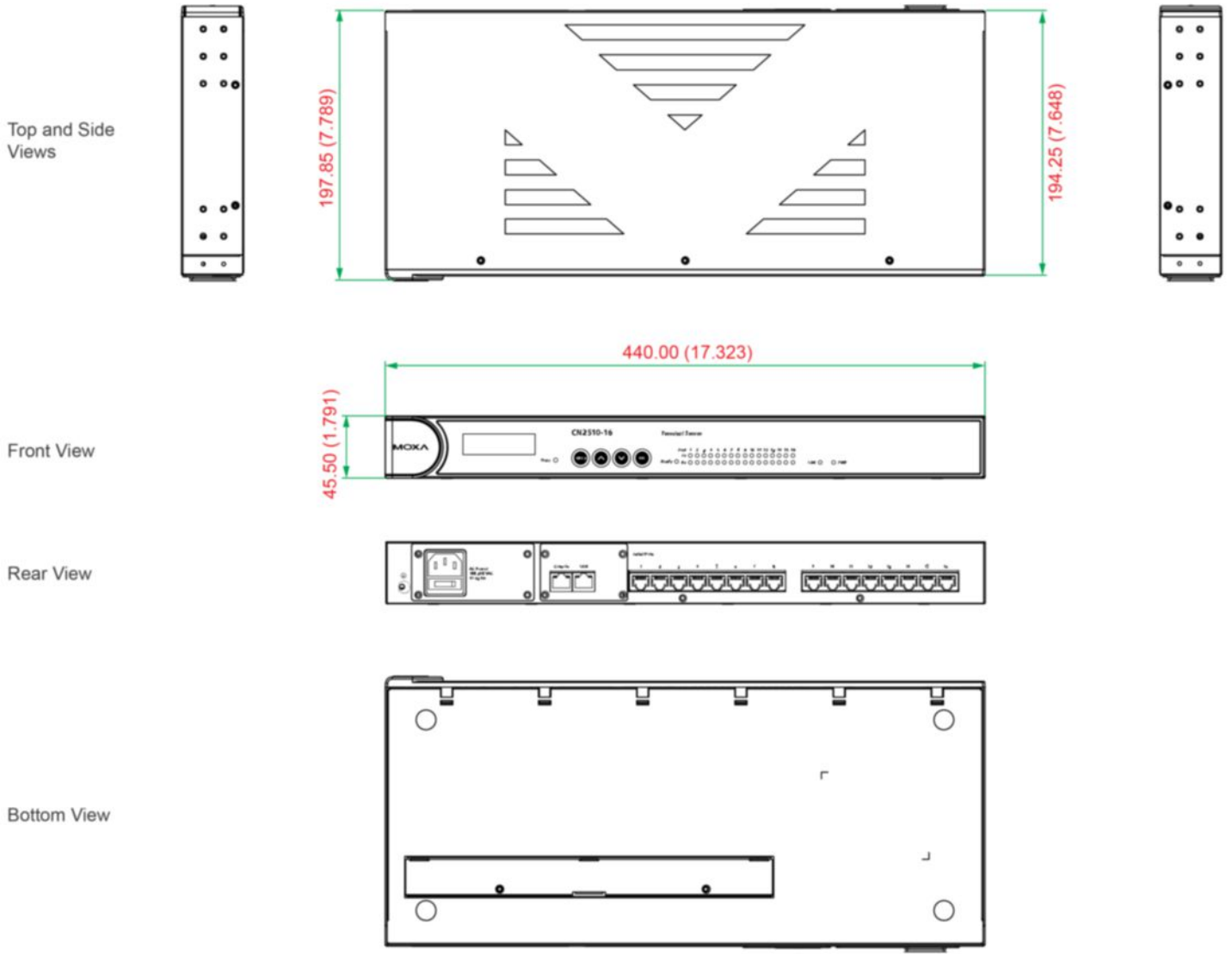
Input Current	CN2510-8/16: 125 mA @ 110 VAC CN2510-8/16-48V: 180 mA @ 48 VDC
Input Voltage	AC models: 100 to 240 VAC (47 to 63 Hz) DC models: \pm 48 VDC (38 to 72 VDC, -38 to -72 VDC)

Physical Characteristics	
Housing	Metal
Installation	19-inch rack mounting
Dimensions	440 x 198 x 45 mm (17.3 x 7.8 x 1.77 in)
Weight	CN2510-8: 2,680 g (5.91 lb) CN2510-8-48V: 2,420 g (5.34 lb) CN2510-16: 2,700 g (5.95 lb) CN2510-16-48V: 2,480 g (5.27 lb)
Environmental Limits	
Operating Temperature	0 to 55°C (32 to 131°F)
Storage Temperature (package included)	-20 to 70°C (-4 to 158°F)
Ambient Relative Humidity	5 to 95% (non-condensing)
Standards and Certifications	
EMC	EN 55032/24
EMI	CISPR 32, FCC Part 15B Class A
EMS	AC models: IEC 61000-4-2 ESD: Contact: 8 kV; Air: 15 kV IEC 61000-4-3 RS: 80 MHz to 1 GHz: 10 V/m IEC 61000-4-4 EFT: Power: 4 kV; Signal: 2 kV IEC 61000-4-5 Surge: Power: 2.5 kV; Signal: 1 kV IEC 61000-4-6 CS: 150 kHz to 80 MHz: 3 V/m; Signal: 3 V/m IEC 61000-4-8 PFMF IEC 61000-4-11 DIPs DC models: IEC 61000-4-2 ESD: Contact: 8 kV; Air: 15 kV IEC 61000-4-3 RS: 80 MHz to 1 GHz: 10 V/m IEC 61000-4-4 EFT: Power: 4 kV; Signal: 2 kV IEC 61000-4-5 Surge: Power: 2.5 kV; Signal: 1 kV IEC 61000-4-6 CS: 150 kHz to 80 MHz: 3 V/m; Signal: 3 V/m IEC 61000-4-8 PFMF IEC 61000-4-8 PFMF
Safety	EN 60950-1, UL 60950-1
MTBF	
Time	CN2510-8: 857,279 hrs CN2510-8-48V: 850,673 hrs CN2510-16: 654,195 hrs CN2510-16-48V: 650,342 hrs
Standards	Telcordia (Bellcore) Standard TR/SR
Warranty	
Warranty Period	5 years
Details	See www.moxa.com/warranty
Package Contents	
Device	1 x CN2510 Series terminal server
Cable	1 x RJ45-to-DB9 console cable 1 x power cord, suitable for your region (AC models)

Installation Kit	1 x rack-mounting kit
Documentation	1 x quick installation guide 1 x warranty card

Dimensions

Unit: mm (inch)



Ordering Information

Model Name	Serial Standards	No. of Serial Ports	Serial Connector	Power Input
CN2510-8	RS-232	8	8-pin RJ45	100-240 VAC
CN2510-8-48V	RS-232	8	8-pin RJ45	±48 VDC
CN2510-16	RS-232	16	8-pin RJ45	100-240 VAC
CN2510-16-48V	RS-232	16	8-pin RJ45	±48 VDC

Accessories (sold separately)

Cables

CBL-RJ45F9-150	RJ45 to DB9 female serial cable, 1.5 m
----------------	--

CBL-RJ45F25-150	RJ45 to DB25 female serial cable, 1.5 m
CBL-RJ45M9-150	RJ45 to DB9 male serial cable, 1.5 m
CBL-RJ45M25-150	RJ45 to DB25 male serial cable, 1.5 m
CBL-RJ45SF9-150	RJ45 to DB9 female serial shielded cable, 1.5 m
CBL-RJ45SF25-150	RJ45 to DB25 female serial shielded cable, 1.5 m
CBL-RJ45SM9-150	RJ45 to DB9 male serial shielded cable, 1.5 m
CBL-RJ45SM25-150	RJ45 to DB25 male serial shielded cable, 1.5 m

Power Cords

PWC-C13AU-3B-183	Power cord with Australian (AU) plug, 1.83 m
PWC-C13CN-3B-183	Power cord with three-prong China (CN) plug, 1.83 m
PWC-C13EU-3B-183	Power cord with Continental Europe (EU) plug, 1.83 m
PWC-C13JP-3B-183	Power cord with Japan (JP) plug, 7A/125V, 1.83 m
PWC-C13UK-3B-183	Power cord with United Kingdom (UK) plug, 1.83 m
PWC-C13US-3B-183	Power cord with United States (US) plug, 1.83 m

Rack-Mounting Kits

WK-45-01	Wall-mounting kit, 2 L-shaped plates, 6 screws, 45 x 57 x 2.5 mm
----------	--

© Moxa Inc. All rights reserved. Updated Jan 18, 2019.

This document and any portion thereof may not be reproduced or used in any manner whatsoever without the express written permission of Moxa Inc. Product specifications subject to change without notice. Visit our website for the most up-to-date product information.